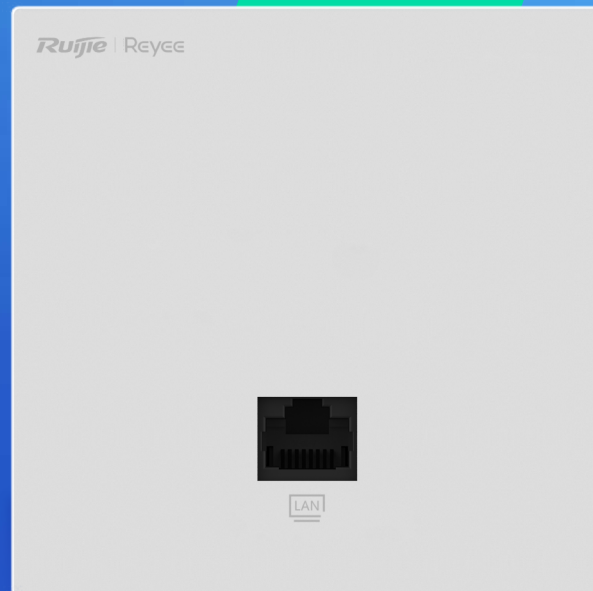


# RG-RAP1261

## Reyee Wi-Fi 6 AX3000 Ultra-Thin Wall Plate Access Point

DATASHEET



### Highlights

- Wi-Fi 6, 2976Mbps, 2\* GE, 86mm Ultra-Thin Design
- Dual-radio performance, gigabit wireless wall-mounted AP
- Better experience with Cooling Patent Technology
- Easy installation, 86mm standard compatible
- Capable of Reyee Mesh and 802.11K/V/R
- Powerful Standalone Portal via Ruijie Cloud

## Highlight Features

### AX3000 Dual-Band Ultra-Thin Wall Plate Access Point

RG-RAP1261



8.5mm  
Ultra Thin



2.4G/5G



2x2 MIMO



Cooling Patent



PoE in 802.3af

### Experience Wi-Fi 6, Experience Gigabit Internet

New upgrade to AX3000, Speed Test reaches 950Mbps, delivering the fastest possible internet experience



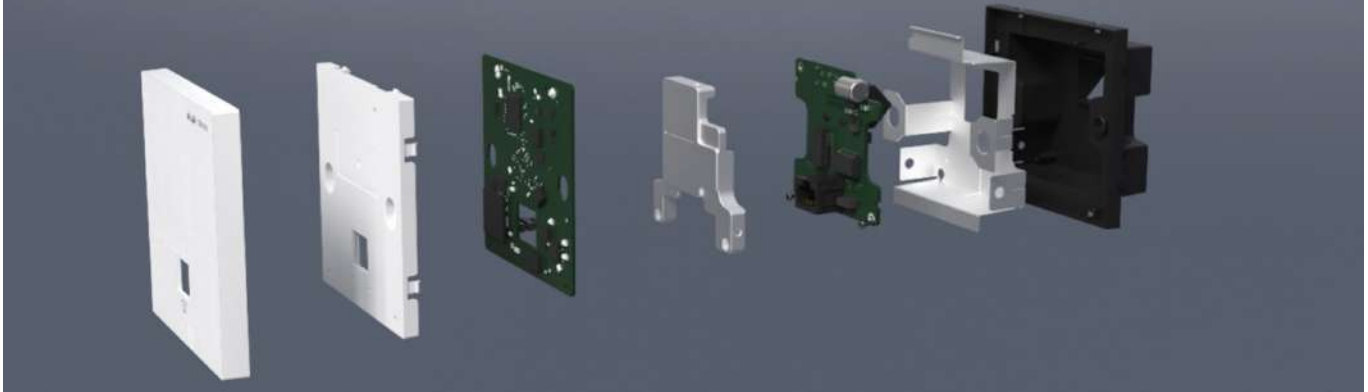
### Easy Installation, Worldwide Compatible



## Highlight Features

### Unprecedented This Design with 8.5mm and Patent Technology

Thinner, Cooler, Stronger. Averagely reduced 7.c in working mode

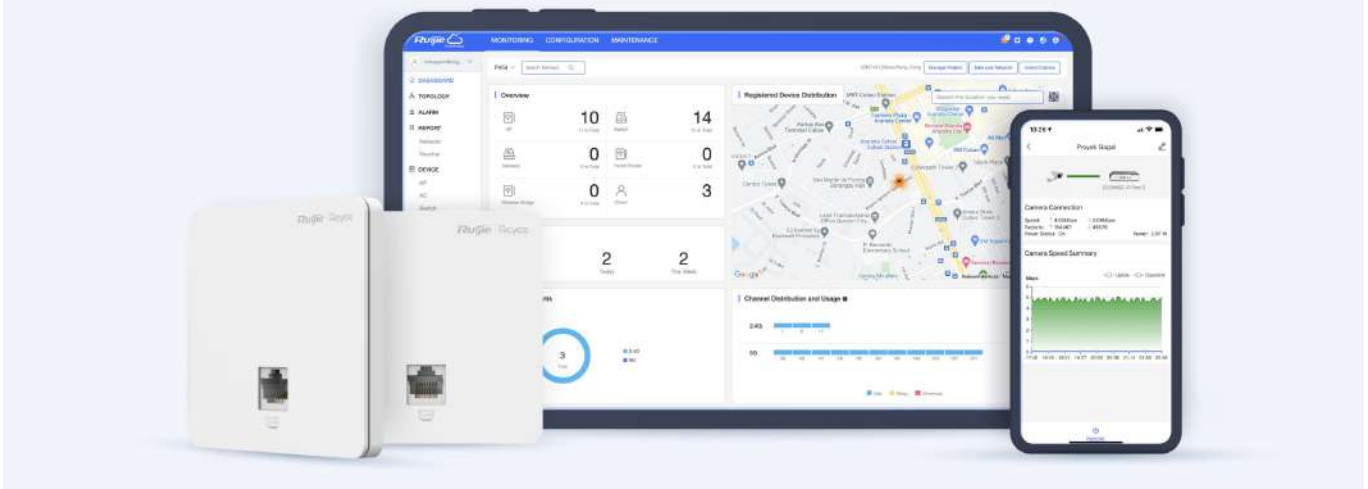


### Smart AI Roaming Enhances Wireless Experience Anywhere You Go



### Cloud, Make Your Business Easy

- Self-organizing network
- Cloud portal authentication
- Remote monitoring and maintenance
- Upgrade firmware via Cloud
- APP library dynamically update



# Specifications

## Basic Features

Wi-Fi Standards	802.11a/n/ac/ax 802.11b/g/n/ax
MIMO	2.4 GHz, 2x2, MU-MIMO 5 GHz, 2x2, MU-MIMO
Max. Data Rate	2.4 GHz: 574 Mbps 5 GHz: 2402 Mbps
Number of Antennas	5
Antenna Type	Built-in omnidirectional antennas
Antenna Gain	2.4 GHz: 1.6 dBi; 5 GHz: 4.13 dBi Note The peak gain mentioned above refers to the gain of a single antenna.
Transmit Power	<p>Frequency bands using and the max EIRP: Note: Country specific restrictions apply</p> <p><b>European Union &amp; United Kingdom</b> 2400-2483.5 MHz, EIRP ≤ 20 dBm 5150-5350 MHz, EIRP ≤ 23 dBm 5470-5725 MHz, EIRP ≤ 30 dBm</p> <p><b>United States:</b> 2400-2483.5 MHz, max output power ≤ 30 dBm &amp; EIRP ≤ 36 dBm 5150-5250 MHz, max output power ≤ 30 dBm &amp; EIRP ≤ 36 dBm 5250-5350 MHz, max output power &lt; 24 dBm &amp; EIRP ≤ 30 dBm 5470-5725 MHz, max output power &lt; 24 dBm &amp; EIRP ≤ 30 dBm 5725-5825 MHz, max output power ≤ 30 dBm &amp; EIRP ≤ 36 dBm</p> <p><b>Myanmar :</b> 2400-2483.5 MHz, EIRP ≤ 23 dBm 5725-5825 MHz, EIRP ≤ 30 dBm</p> <p><b>Thailand:</b> 2400-2483.5 MHz, EIRP ≤ 20 dBm 5150-5350 MHz, EIRP ≤ 23 dBm 5470-5725 MHz, EIRP ≤ 30 dBm 5725-5825 MHz, EIRP ≤ 30 dBm</p> <p><b>Indonesia:</b> 2400-2483.5 MHz, EIRP ≤ 27 dBm 5150-5350 MHz, EIRP ≤ 23 dBm 5725-5825 MHz, EIRP ≤ 23 dBm</p> <p><b>Egypt:</b> 2400-2483.5 MHz, EIRP ≤ 20 dBm 5150-5350 MHz, EIRP ≤ 23 dBm</p>
Fixed Ports	1 x 10/100/1000Base-T Ethernet uplink port 1 x 10/100/1000Base-T Ethernet downlink ports 1 x Reset hole

# Specifications

## Software Features

Max. Number of Concurrent STAs	512
Recommended Number of Concurrent STAs	110
Max. Number of SSIDs	8

Supported Frequency Bands  
 802.11b/g/n/ax: 2.400 GHz to 2.483 GHz  
 802.11a/n/ac/ax: 5.150 GHz to 5.350 GHz, 5.470 GHz to 5.725 GHz, 5.725 GHz to 5.850 GHz  
 Note: Country-specific restrictions apply.

### WLAN Basic Features

Power Adjustment	✓
Channel Bandwidth	2.4 GHz: Auto/20 MHz/40 MHz 5 GHz: Auto/20 MHz/40 MHz/80 MHz/160 MHz
Roaming	Layer 2 roaming Layer 3 roaming 802.11k/v/r roaming
OFDMA	✓
Beamforming	✓
Target Wake Time (TWT)*	✓
Wi-Fi Multimedia (WMM)	✓
Radar Signal Detection and Frequency Hopping (DFS)	✓

### WLAN Security

Wi-Fi Password	16 characters
Security Mode	WAP-PSK, WAP2-PSK, and WPA-WAP2-PSK
Blocklist and Allowlist	✓

### Enhanced User Experience

Wi-Fi Optimization	✓
STA Limiting	✓

# Specifications

## Software Features

Removing Low-RSSI STAs	✓
Removing Low-RSSI STAs	✓
Syslog Recording Why Users Lose Connection	✓
Auto Channel and Power Adjustment on Cloud	✓
RSSI Threshold for STA Access	✓
Load Balancing	✓

## Networks

Network Access Mode	PPPoE Client DHCP Client Static IP
Avoidance of WAN IP Address Conflicts	✓
VLAN	Port-based VLAN VLAN over 802.1Q TV projection screen
DHCP Server	✓

## System

Cloud Management	✓
App Management	✓
App Upgrade	✓
App Restart	✓
Scheduled Restart	✓
Default Access/Password	10.44.77.254 The factory status password: admin
Local Upgrade	✓
Online Upgrade	✓
Backup	✓

# Specifications

## Hardware Features

Factory Reset	✓
Language	Chinese English
System Log	✓
Diagnostics	✓
Network Check	✓

## Hardware Features

LED	1 x System status LED
Reset Hole	1 x Reset hole
Dimensions (W x D x H)	86 mm x 86 mm x 42.4 mm (3.39 in. x 3.39 in. x 1.67 in.)
Weight	0.16 kg (without the mounting bracket)
Installation Method	In-wall mounting
Pole Diameter	N/A
Power Supply	IEEE 802.3af/at PoE
Max. Power Consumption	10.2 W
PoE Power Budget	N/A

## Environment

Operating Temperature	0°C to 40°C (32°F to 104°F)
Storage Temperature	-40°C to +70°C (-40°F to +158°F)
Operating Humidity	5% to 95% RH (non-condensing)
Storage Humidity	5% to 95% RH (non-condensing)
Ingress Protection Rating (IP Rating)	IP41
Surge Protection	+/-4kV
MTBF	400,000 hours

# Package Contents

Package Information	RG-RAP1261
RG-RAP1261 Access Point	1
Power Adapter	N/A
User Manual	1
Cat5e UTP Cable	N/A
Screw	2
Certification	CE
Warranty Card	1



*Ruijie* | RCYCC

 **R**edefine your **e**asy network

---

Copyright ©2000-2023 Ruijie Networks Co., Ltd. All rights reserved.

No part of this document may be reproduced or transmitted in any form or any means without prior written consent of Ruijie Networks Co., Ltd.

#### Notice

This content is applicable only to regions outside the China mainland. Ruijie Networks Co., Ltd. reserves the right to interpret this content.

The information contained herein is subject to change without notice. Nothing herein should be construed as constituting an additional warranty. Ruijie Networks Co., Ltd. shall not be liable for technical or editorial errors or omissions contained herein.



Ruijie Networks Co., Ltd.  
Building 19, Juyuanzhou Industrial Park, No.618 Jinshan  
Road, Cangshan District, Fuzhou, Fujian, China  
Website: <https://www.ruijienetworks.com>